



RT320BT
WIRED DIGITAL
THERMOSTAT
QUICK GUIDE



Manufacturer: SALUS Controls plc
Units 8-10, Northfield Business Park, Forge Way,
Parkgate Rotherham, S60 1SD, United Kingdom

Importer: Salus Controls European Distribution sp.z o.o.
ul. Szamocka 8, piętro 6., 01 748 Warszawa, Poland

UK: tech@salus-tech.com
DE: info@salus-controls.de
PL: poland@saluscontrols.com
FR: technicalsupport@saluscontrols.fr
RO: tehnic@saluscontrols.ro
DK: Support@salus-controls.dk



www.saluscontrols.com

SALUS Controls is a member of the Computime Group.
Maintaining a policy of continuous product development
SALUS Controls plc reserve the right to change specification,
design and materials of products listed in this brochure
without prior notice.



Introduction

The **RT320BT** thermostat starts in manual mode. Use **Bluetooth mode** to customize settings and create your schedule. The thermostat is designed to regulate the temperature of heating or cooling systems. It operates on 4 x AAA, 1.5V alkaline batteries, which must be inserted into the compartment behind the removable wall plate. Rechargeable batteries are not supported.

Product Compliance

This product complies with the essential requirements and other relevant provisions of Directives: GSPR 2023/988/EU, RED 2014/53/EU and 2025/138/EU Cyber issue, RoHS 2015/863/EU amended 2017/2102, 251 SVHC 1907/2006. RED 2014/53/EU and 2025/138/EU Cyber issue, RoHS 2015/863/EU amended 2017/2102, 251 SVHC 1907/2006. The full text of the EU Declaration of Conformity is available at the following internet address: www.saluslegal.com.

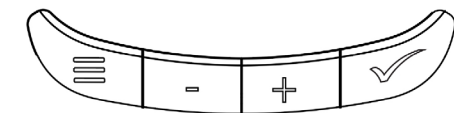
Safety Information

Use in accordance to national and EU regulations. Use the device as intended, keeping it in dry condition. Product for indoor use only. Installation must be carried out by a qualified person in accordance to national and EU regulations.

Box content

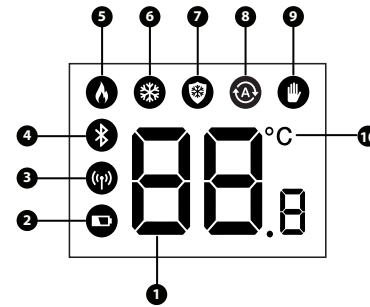


Buttons description



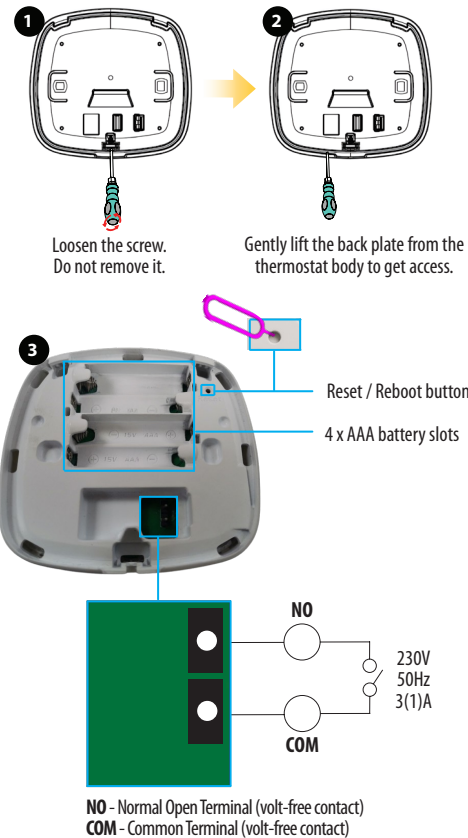
- MENU**
Press for 5s- Enters the setting Heating or Cooling mode.
Press for 10s- enters the installer Mode. Short press to switch modes (auto, manual, frost) toggle to next mode.
If you're inside a settings screen and press the 'Menu' button, you'll return to the previous step without saving.
- MINUS**
Decrease parameter value/moving on the menu in 'DOWN' direction
- PLUS**
Increase parameter value/moving on the menu in 'UP' direction
- OK/Validation**
Confirms setting or selection

Icons description

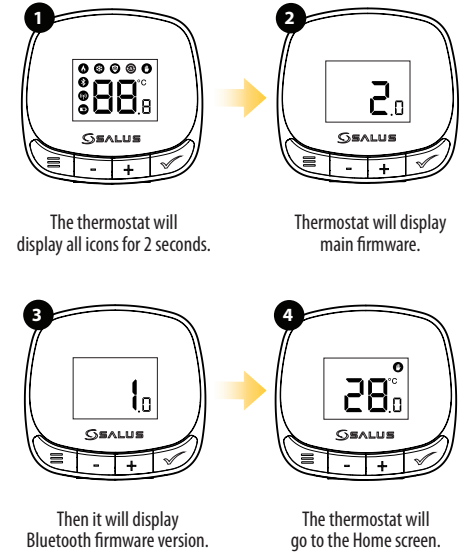


- 1. Room/Setpoint temperature
- 2. Battery indicator
- 3. RF icon (only for RF version)
- 4. Bluetooth icon
- 5. Heating mode
- 6. Cooling mode
- 7. Frost protection
- 8. Schedule mode
- 9. Manual mode
- 10. Temperature scale in degrees Celsius

Back plate access & wiring

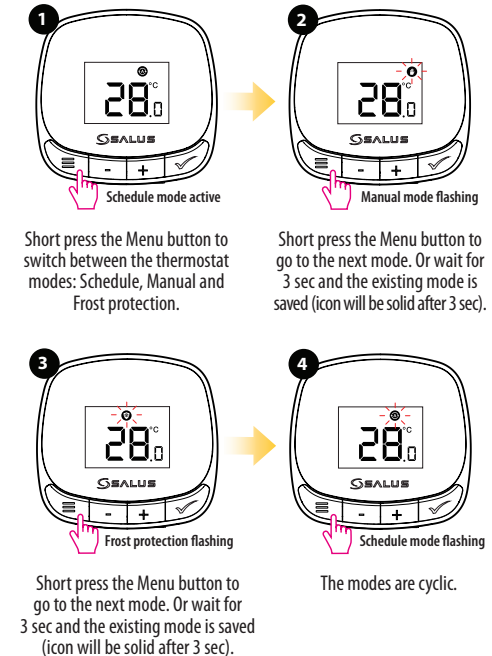


First power-up

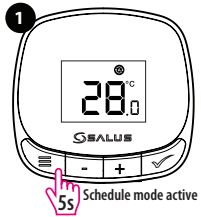


Thermostat modes

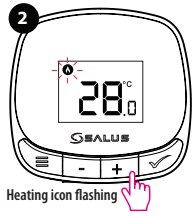
Note: Make sure that the backlight is on before attempting to operate the thermostat. First press to turn the display on, then proceed with other button operations.
Important: Schedule settings can only be configured via the thermostat's Bluetooth function.



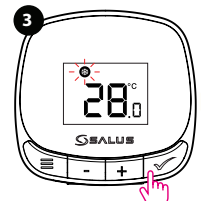
Choose heating or cooling



Press the Menu button for 5 seconds to enter Heat/Cool mode selection.



Existing mode icon is flashing. Press + or - to choose heating or cooling mode. Default mode is heating mode.



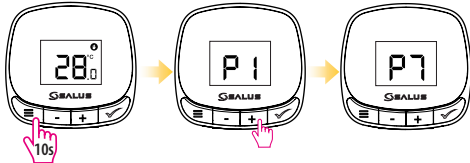
Press the OK button to choose this mode or the Menu button to return to the Home screen.



After 5 seconds of inactivity, the thermostat will return to Home screen with the chosen mode saved.

Installer mode

i To enter Installer mode, press the button for 10 seconds. Use the + and - buttons to navigate through the parameters (P1 to P7) and to change settings. Use the button to save your settings.



P1 - Temperature accuracy (0.5 and 0.1 increments).

P2 - Temperature calibration (range is between -3.5 and +3.5).

P3 - Frost protection setpoint (5 - 17°C range with 0.5 increments).

P4 - Algorithm for temperature control (Span and ITLC, with ITLC as default):

SP (Span) → Options: 0.25, 0.5, 1, 1.5, 2°C → Press to confirm.

LC (ITLC) → Options: 3, 6, or 9 cycles → Press to confirm.

P5 - Maximum value for setpoint (5 - 35°C range with 0.5 increments).

P6 - Minimum value for setpoint (5 - 35°C range with 0.5 increments).

P7 - Algorithm for temperature control:

- No - normally open
- Nc - normally closed

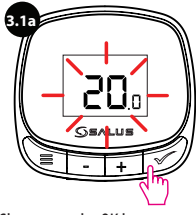
Change setpoint temperature



Short press the + or - button to show the setpoint temperature.



Short press the + button to increase the setpoint with 0.5°C increments.

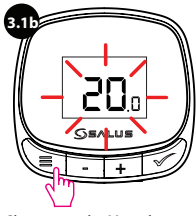


Short press the OK button or wait for 10 seconds. Setpoint range is between 5° and 35°C.



New setpoint is saved and the thermostat returns to the home screen.

OR



Short press the Menu button.



The thermostat returns to the Home screen. No changes saved.

i Note: The default setpoint for frost protection is 5°. Short pressing the + or - buttons will have no effect in frost protection mode.

Sleep mode



Press the - and + buttons for 3 seconds to activate Sleep mode.

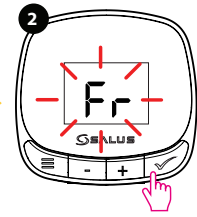


Sleep mode is active. Press any button to return to the Home screen.

Factory reset



Press the OK button for 10 seconds to enter Factory reset (Fr) mode.



Fr is flashing after releasing the button. Press the OK button again to confirm factory reset.



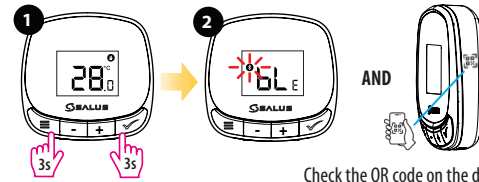
The thermostat will display all icons.



The thermostat will return to the Home screen.

Bluetooth activation and app control

i To activate Bluetooth mode, press and buttons for 3 seconds. The thermostat will display with the icon flashing. Bluetooth mode is active for 10 minutes. To deactivate the mode, press the button to return to the main screen.

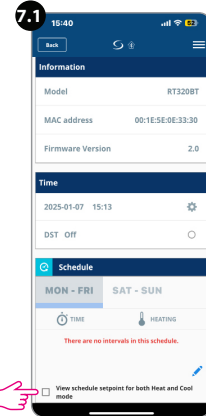
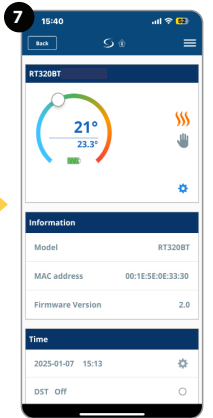
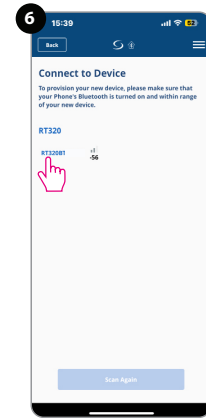
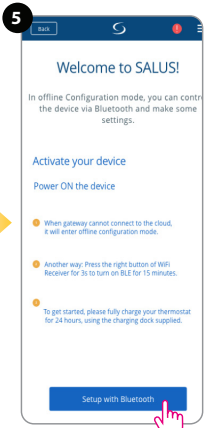
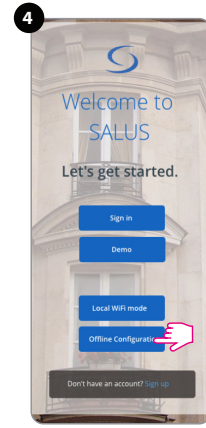


Check the QR code on the device to ensure proper identification before Bluetooth pairing."

3 SCAN HERE TO DOWNLOAD THE APP



Install the Salus Premium Lite app.



i Note: Choose advanced settings by pressing the icon at step 7 to access more options for setting up your thermostat. Don't forget to save your settings.